



📍 31 Field View, Chippenham, SN15 2QT

🏠 £150,000

A spacious and well-presented two double bedroom ground floor flat, with lovely views over green space, benefitting from an allocated off-road parking space, and only a short walk from Chippenham town centre,

- Ground Floor Apartment
- Spacious & Well-Presented Throughout
- Two Double Bedrooms
- Large Sitting / Dining Room
- Fitted Kitchen
- Shower Room
- Views Over Green Space
- Allocated Parking Space
- Short Walk to Town Centre

🏠 Leasehold

🏠 EPC Rating C



A fantastic opportunity to purchase a two bedroom ground floor apartment, superbly positioned in central Chippenham, only a short walk into the town centre, and railway station. The accommodation is spacious, light & airy, and well-presented throughout, and would make a great first time purchase or downsize option.

Arranged over a single level, and accommodation briefly comprises; communal entrance, private door, entrance hall, two generous double bedrooms, both with views over the neighbouring green space, shower room, large sitting / dining room, and finally the fitted kitchen.

Externally there is an outside store, and allocated off-road parking space.

#### **Situation**

Field View is situated within a few minutes walk of the town centre and all local amenities to include Public Library, Bus Station, Railway Station, Sports Centre with Swimming Pool, Doctor's Surgery and Hospital. The M4 motorway at Junction 17 offers good motor commuting to the major centres of Bath, Bristol, Swindon and London.

#### **Property Information**

Tenure: Leasehold

78 Years Remaining on Lease

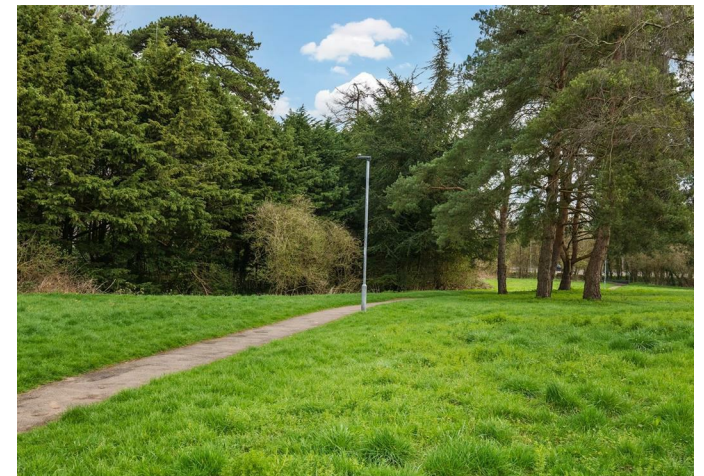
Management Fees are approximately £189 pcm

Council Tax Band: B

Gas Central Heating

Mains Gas, Electricity, Water & Drainage

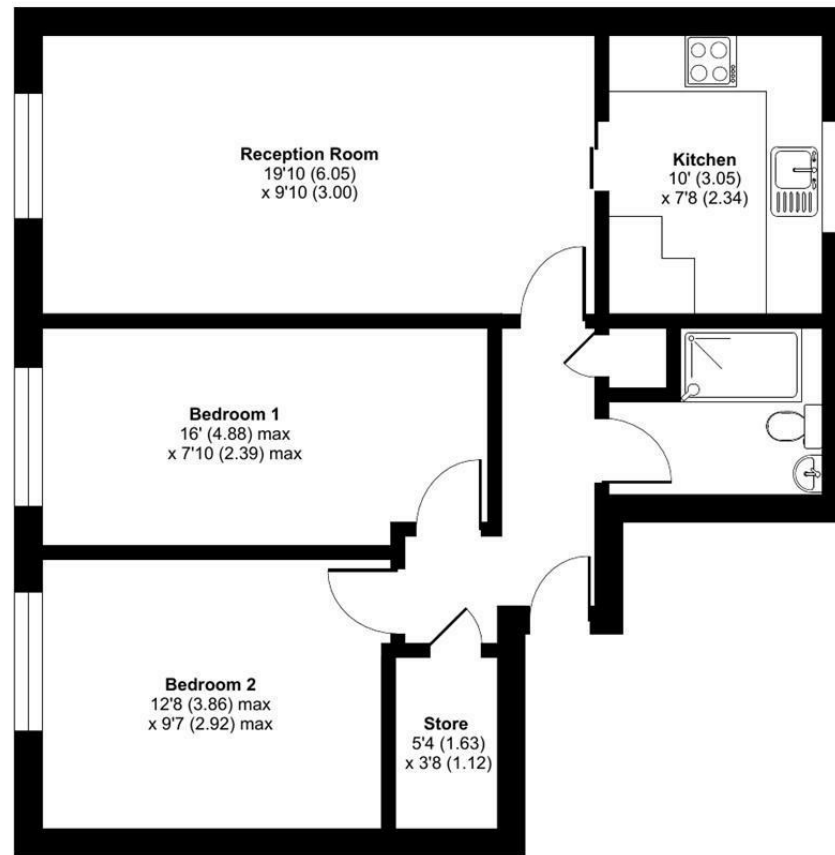
EPC Rating: C



# Field View, Chippenham, SN15

Approximate Area = 672 sq ft / 62.4 sq m

For identification only - Not to scale



GROUND FLOOR



Floor plan produced in accordance with RICS Property Measurement 2nd Edition, Incorporating International Property Measurement Standards (IPMS2 Residential). © nctechcom 2026. Produced for Strakers. REF: 1424265

Disclaimer These particulars, whilst believed to be accurate are set out as a general outline only for guidance and do not constitute any part of an offer or contract. Intending purchasers should not rely on them as statements of representation of fact, but must satisfy themselves by inspection or otherwise as to their accuracy. No person in this firm's employment has the authority to make or give any representation or warranty in respect of the property. All measurements and distances are approximate only. Your home is at risk if you do not keep up repayments on a mortgage or other loan secured on it.